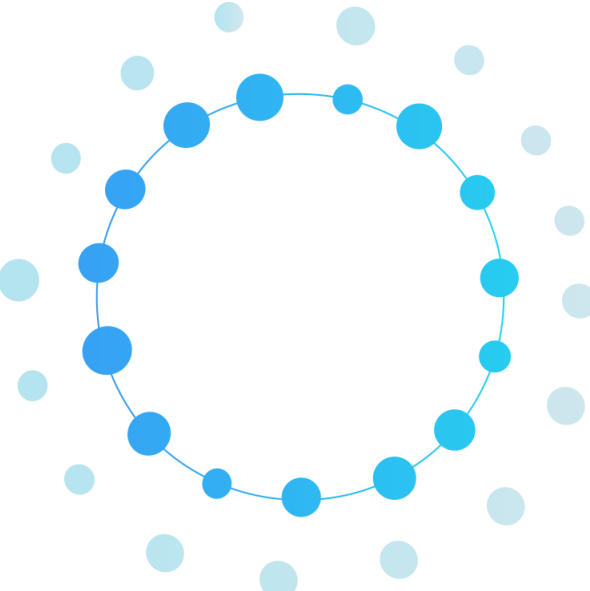


SENSOME

A stylized letter 'O' composed of a central ring of blue dots connected by a thin line, surrounded by a larger, fainter ring of light blue dots.

Sensitive Medical Devices




**Pils-Brauerei
Schierling**


**Pils-Brauerei
Schierling**


**Pils-Brauerei
Schierling**



2014 FIFA World Cup™ Champions



CHAMPIONS

2014 FIFA World





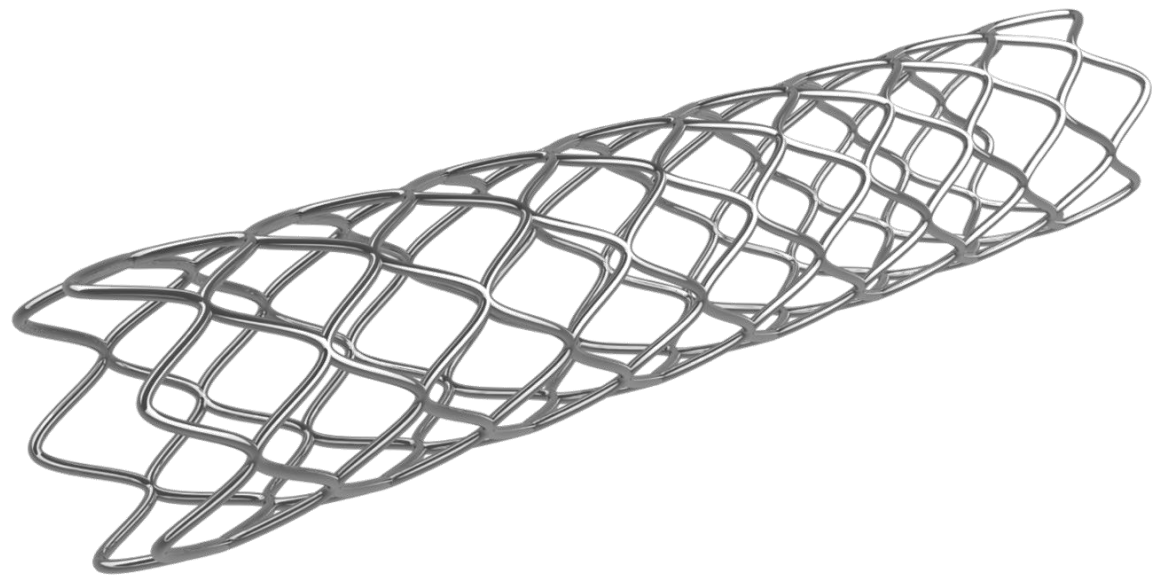
FULBRIGHT


A stylized globe logo consisting of several overlapping horizontal and vertical lines forming a grid pattern, positioned below the word 'FULBRIGHT'.











Team

Resources

Opportunity

Entrepreneur

STANFORD
BUSINESS

GRADUATE
SCHOOL OF

Ignite-Polytechnique
Paris



ÉCOLE
POLYTECHNIQUE
UNIVERSITÉ PARIS-SACLAY





© Présidence de la Répu

Former French president







1 team + 18 months = 2 successful animal trials









Reimbursement

CE (EEA)

FDA (US)

Safety

Performance

Safety

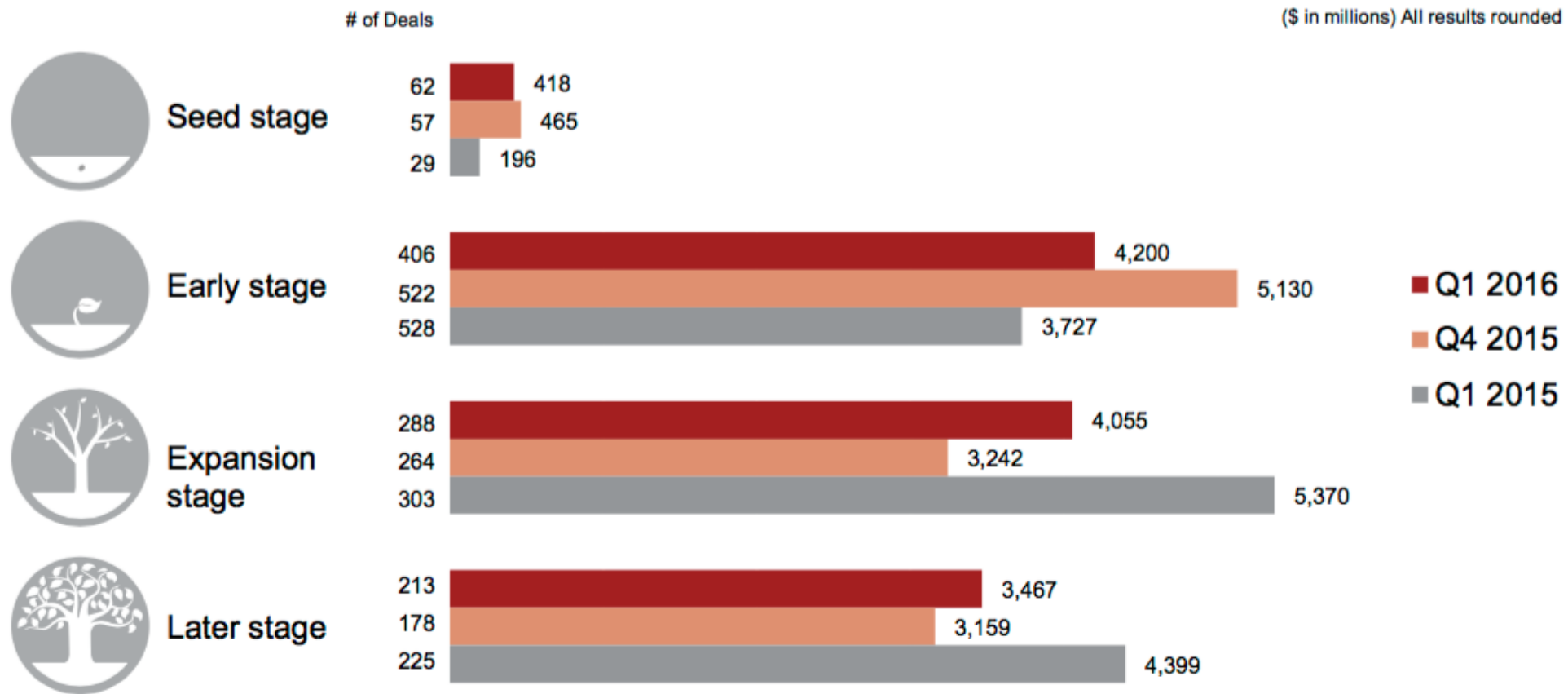
Efficacy



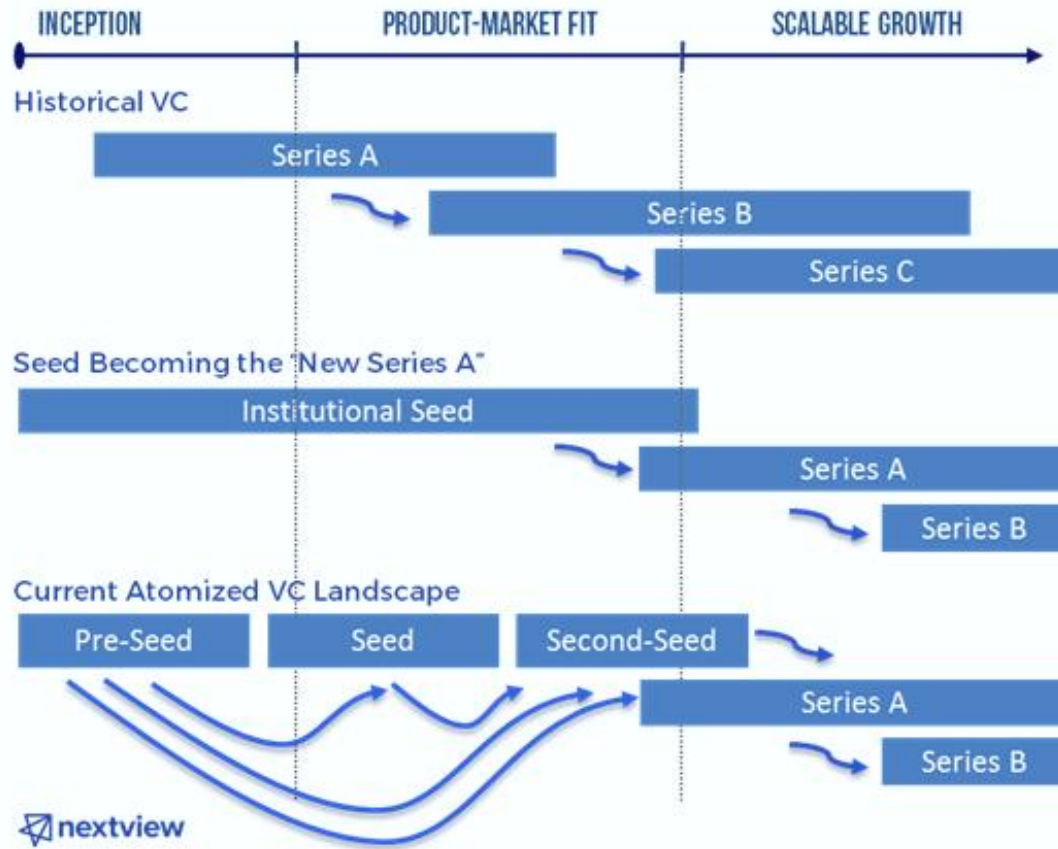
MIND THE GAP

“US funds invest in case your company succeeds, whereas in Europe, they invest because your company succeeded.”

- Mathilde Collin



Source: PwC Money Tree report, Q1 2016



Money is like gasoline during a road trip. You don't want to run out of gas on your trip, but you're not doing a tour of gas stations.

Startup Quote!



TIM O'REILLY
FOUNDER, O'REILLY MEDIA





	Ranking		Performance	Funding	Market Reach	Talent	Startup Experience	Growth Index
Silicon Valley	1	0	1	1	1	2	1	4.2
New York City	2	0	3	2	3	7	4	4.5
London	3	▲ 3	4	4	2	10	5	4.8
Beijing	4	NEW	2	5	19	8	2	4.4
Boston	5	▼ -1	6	6	12	4	3	4.0
Tel Aviv	6	▼ -1	9	8	4	11	7	4.5
Berlin	7	▲ 2	7	9	6	5	10	4.6
Shanghai	8	NEW	8	3	10	9	13	5.5
Los Angeles	9	▼ -6	5	7	15	14	11	4.2
Seattle	10	▼ -2	12	13	14	3	6	4.5
Paris	11	0	14	14	9	16	8	4.2
Singapore	12	▼ -2	16	16	11	1	20	4.6
Austin	13	0	15	11	18	6	9	4.3
Stockholm	14	NEW	17	20	8	18	12	5.3
Vancouver	15	▲ 3	19	19	7	15	15	4.3
Toronto	16	▲ 1	18	12	5	20	18	4.7
Sydney	17	▼ -1	20	10	13	12	17	6.3
Chicago	18	▼ -11	13	15	20	13	14	3.9
Amsterdam	19	0	10	17	17	19	16	4.8
Bangalore	20	▼ -5	11	18	16	17	19	4.7

METRO-STARTUP.COM

La carte des aides et financements de votre entreprise innovante en France

3ème édition

Partenariat avec un laboratoire

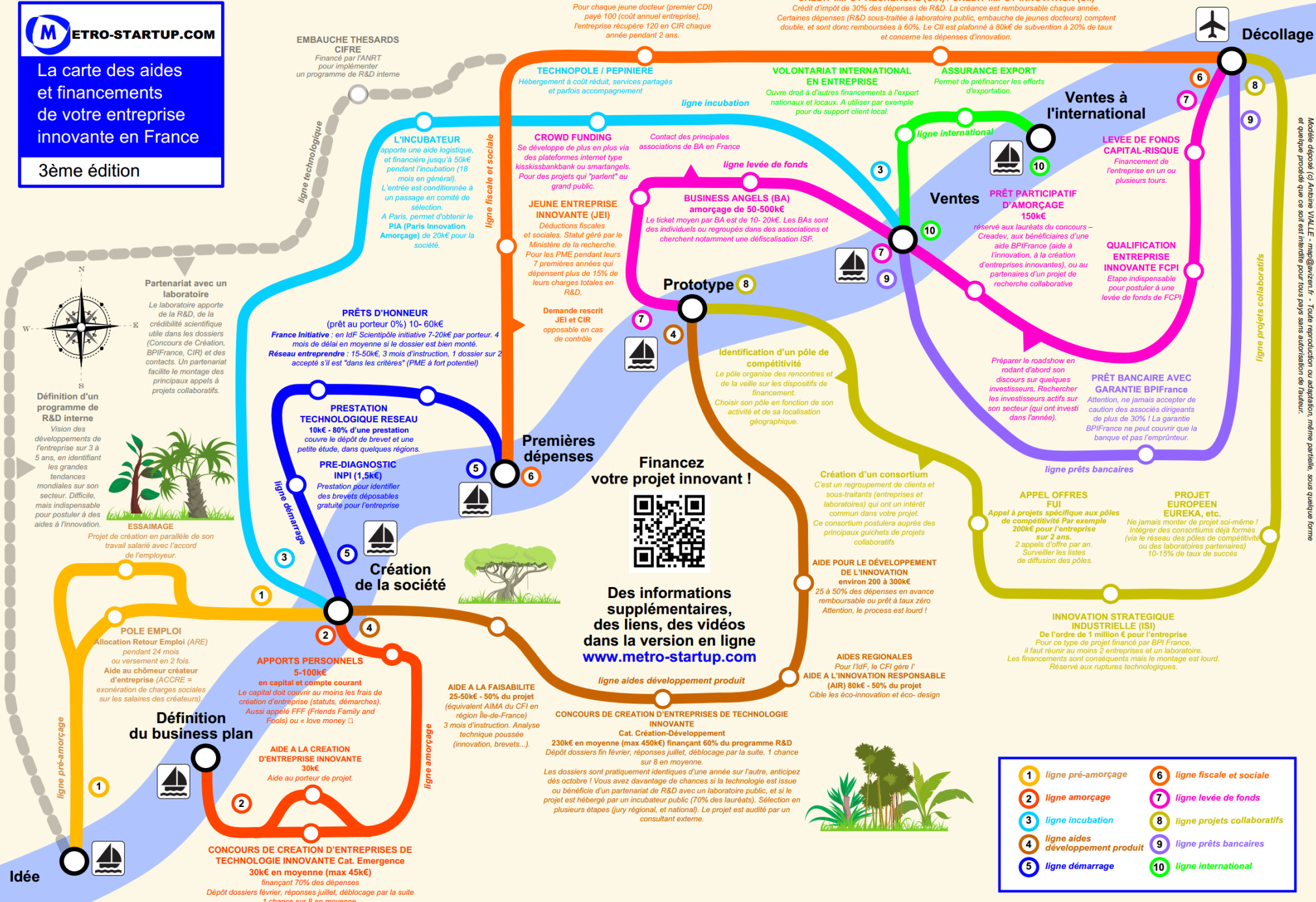
Le laboratoire apporte de la R&D, de la crédibilité scientifique utile dans les dossiers (Concours de Création, BPIFrance, CIR) et des contacts. Un partenariat facilite le montage des principaux appels à projets collaboratifs.

Définition d'un programme de R&D interne

Vision des développements de l'entreprise sur 3 à 5 ans, en identifiant les grandes tendances mondiales sur son secteur. Difficile, mais indispensable pour postuler à des aides à l'innovation.

ESSAIMAGE

Projet de création en parallèle de son travail salarié avec l'accord de l'employeur.



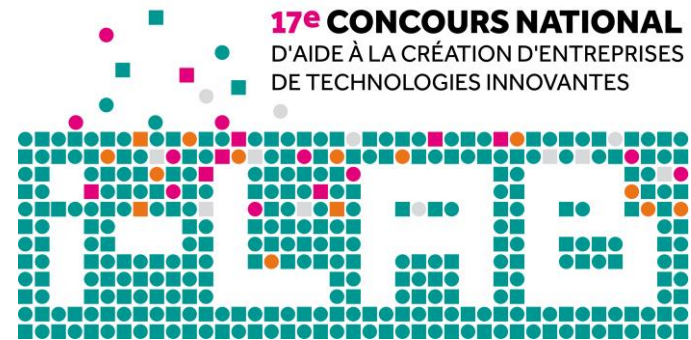
1	ligne pré-amorçage	6	ligne fiscale et sociale
2	ligne amorçage	7	ligne levée de fonds
3	ligne incubation	8	ligne projets collaboratifs
4	ligne aides développement produit	9	ligne prêts bancaires
5	ligne démarrage	10	ligne internationale

Modèle déposé (© Antoine VIALLE - map@wizen.fr) - Toute reproduction ou adaptation, même partielle, sous quelque forme et quelque procédé que ce soit est interdite pour tous pays sans autorisation de l'auteur.



INNOVATION 2030
CONCOURS MONDIAL D'INNOVATION

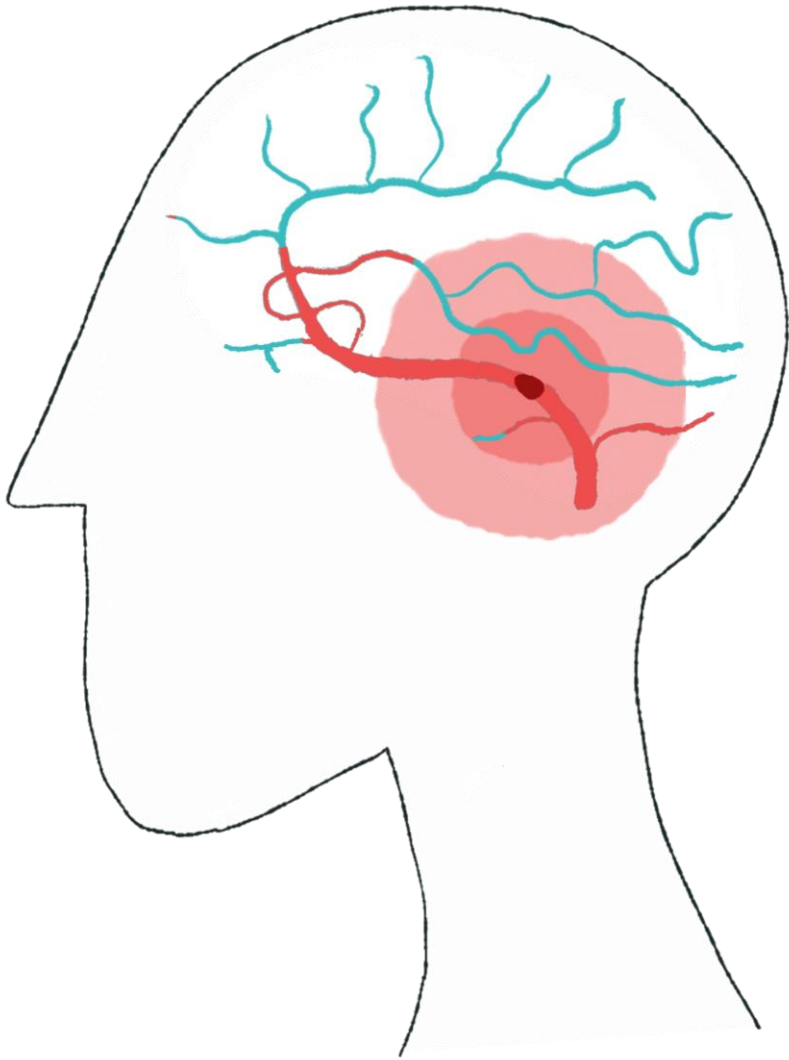




INNOVATION 2030
CONCOURS MONDIAL D'INNOVATION



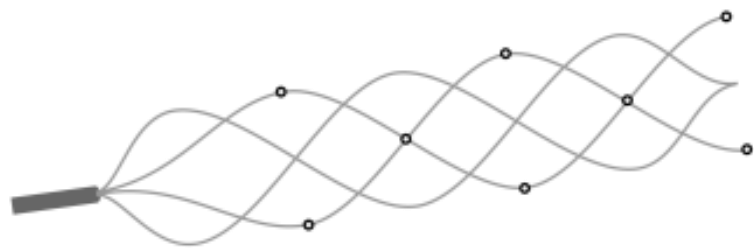
bpifrance



Each year

- 1.5 M ischemic strokes in Europe and US
- 1/3 dies and 1/3 is left with disability
- \$44 B direct cost in the US
- 18.5 B € direct cost in Europe

Ischemic stroke is one of the leading causes of death and disability



PPP



PRP



Mix-20



Mix-50



FBd



FBs

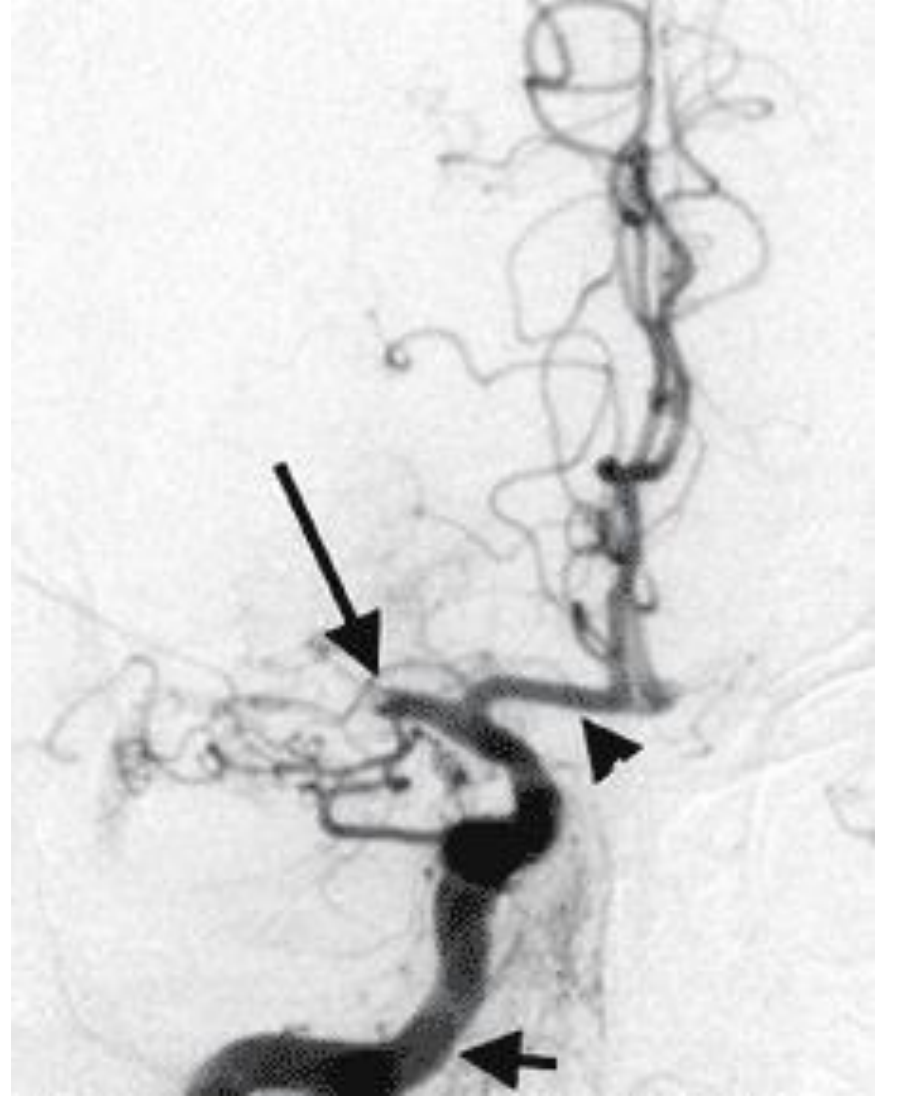
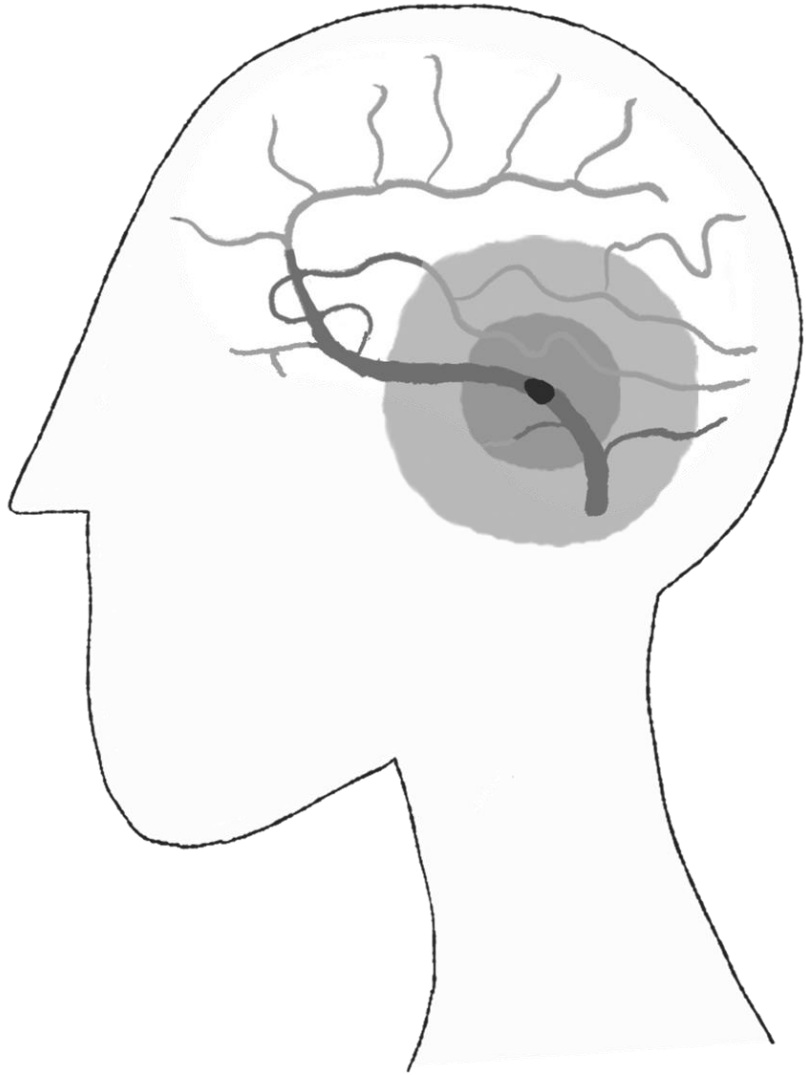


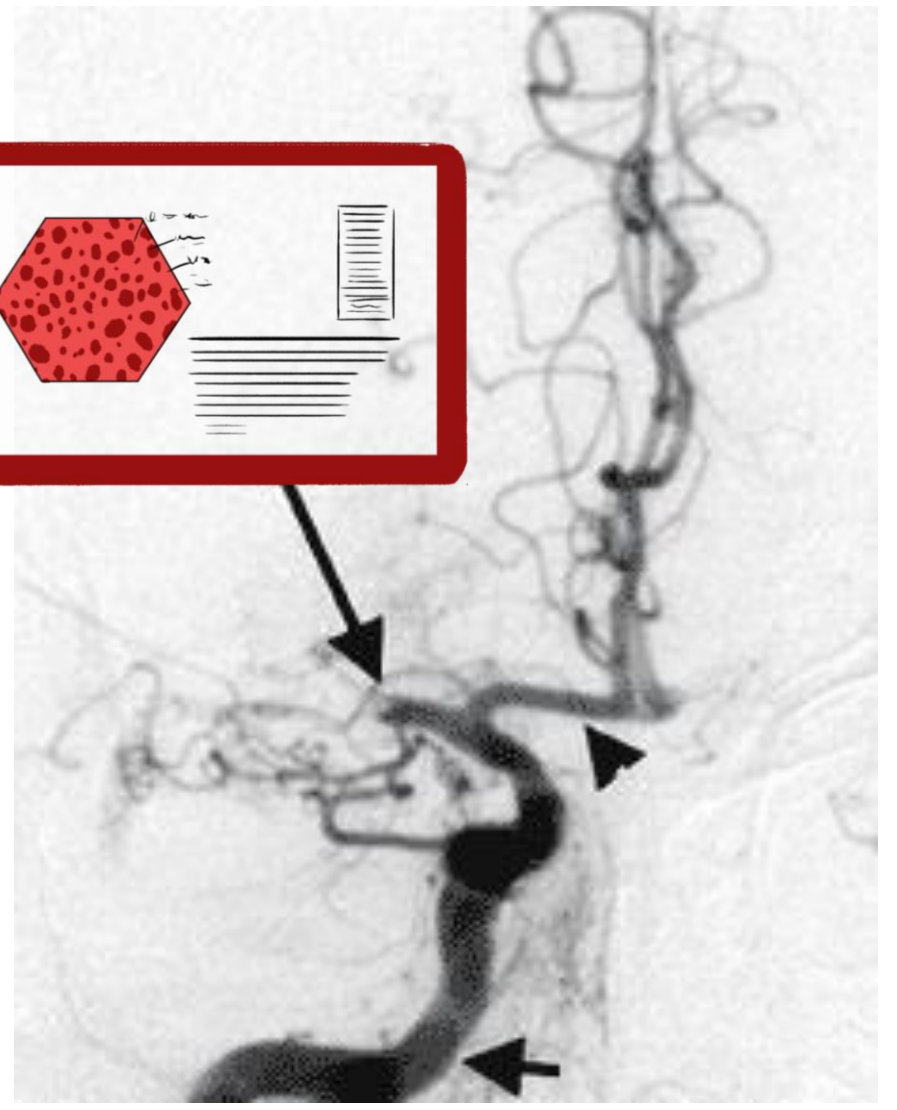
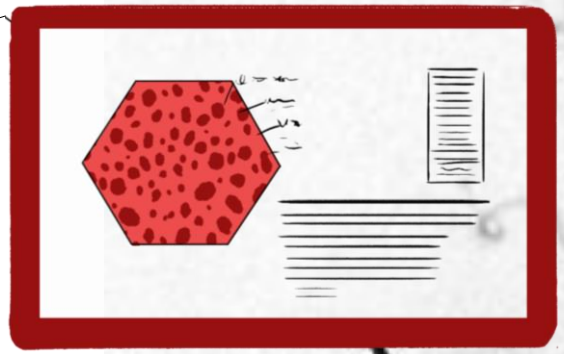
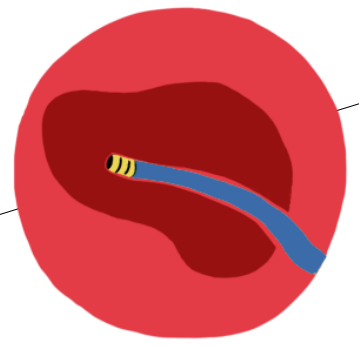
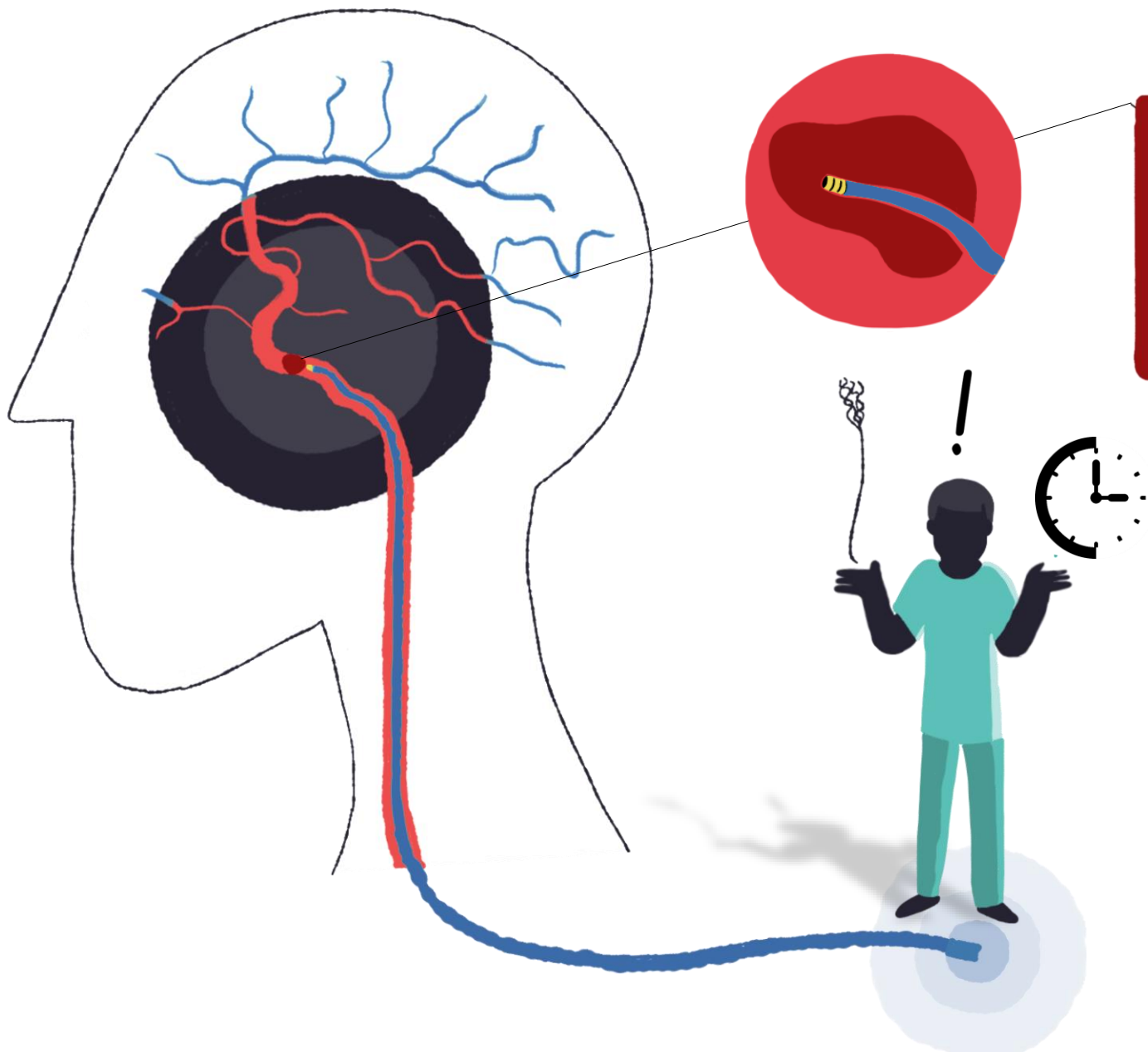
FBs

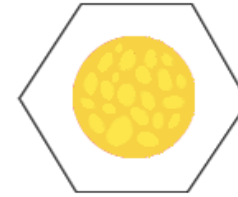
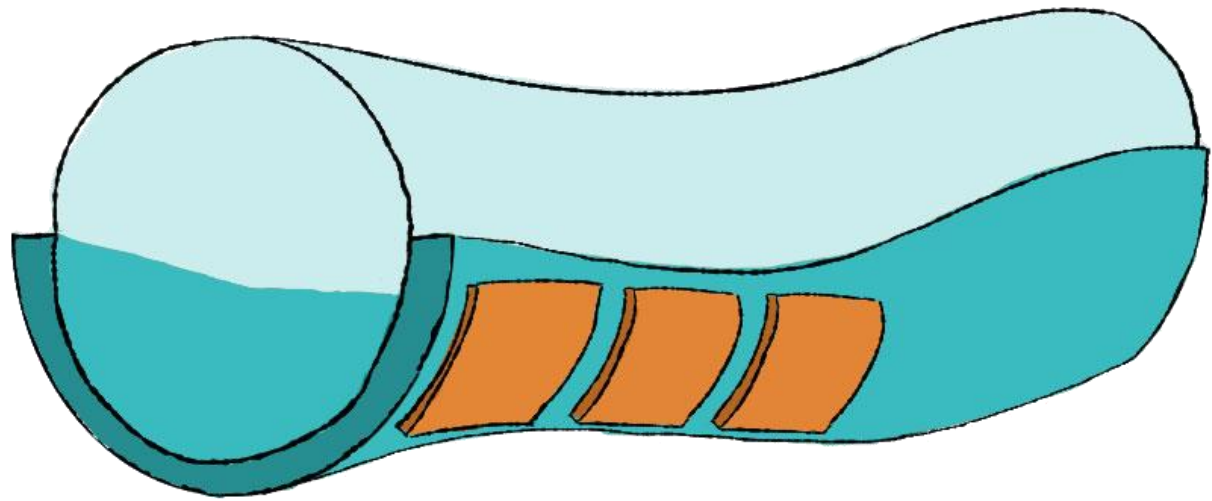


Mix-20

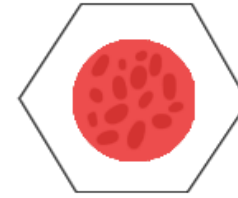




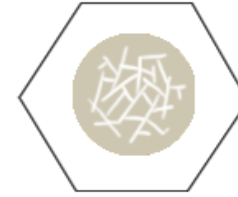




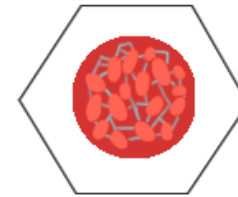
ENDOTHELIAL CELLS



SMOOTH-MUSCLE CELLS

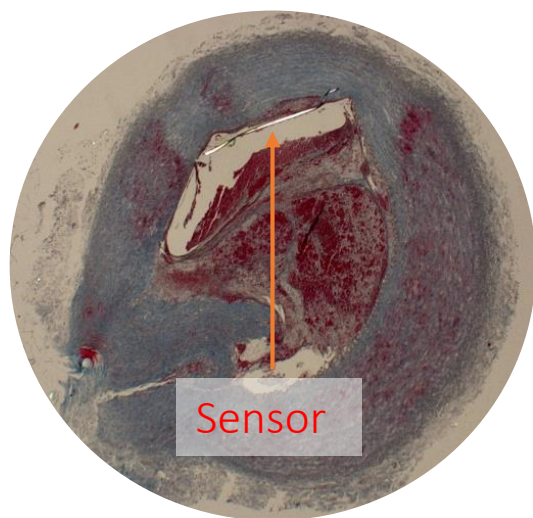


WHITE THROMBUS



RED THROMBUS

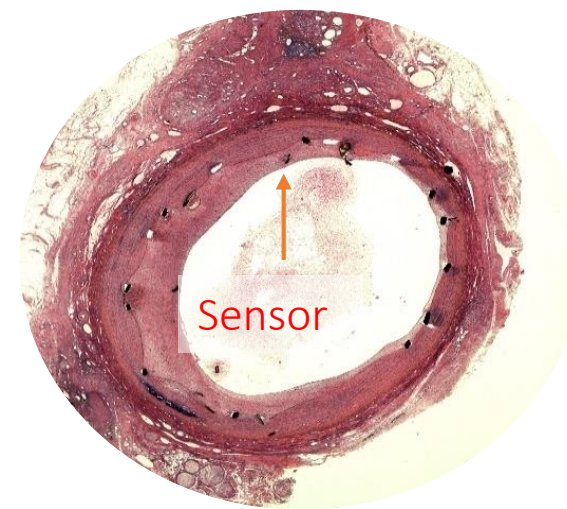
red thrombus



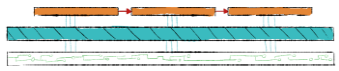
2015



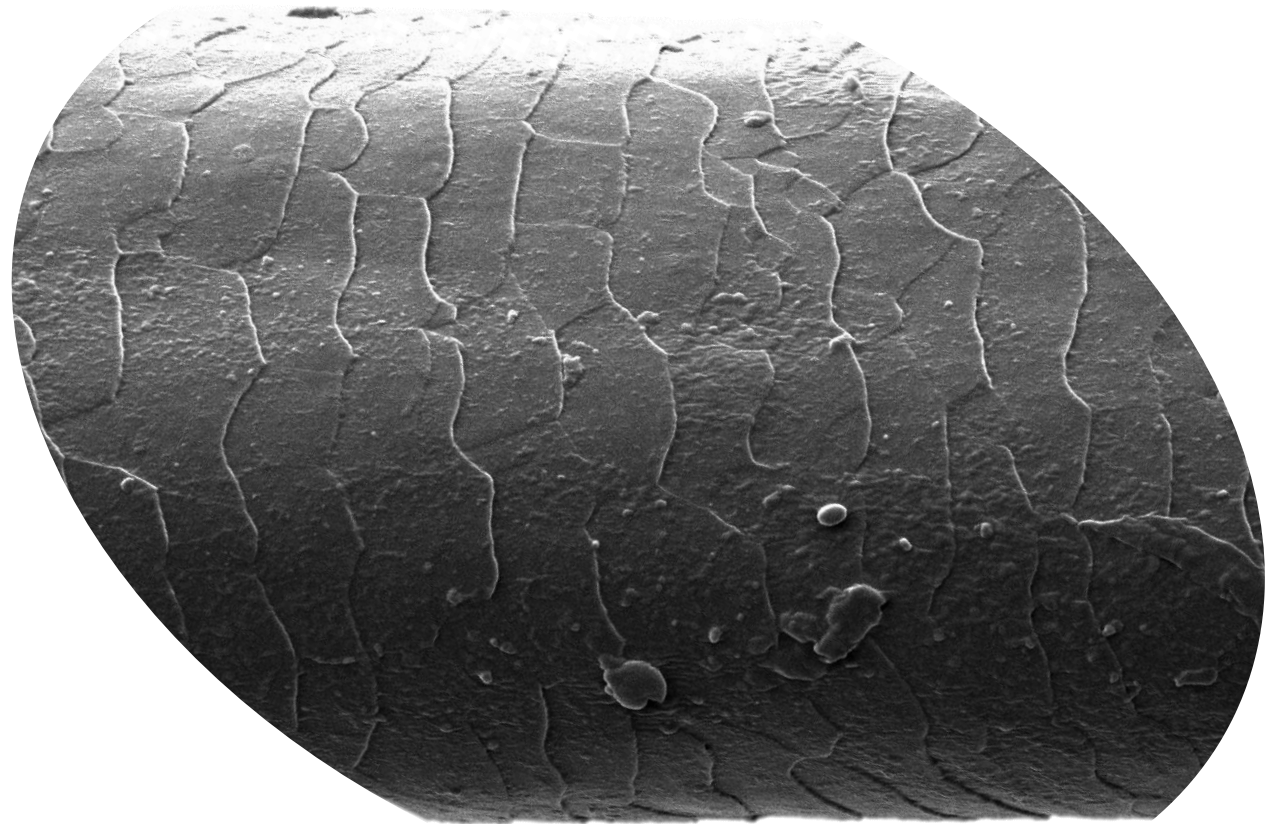
smooth-muscle cells



2016



Sensor film layer



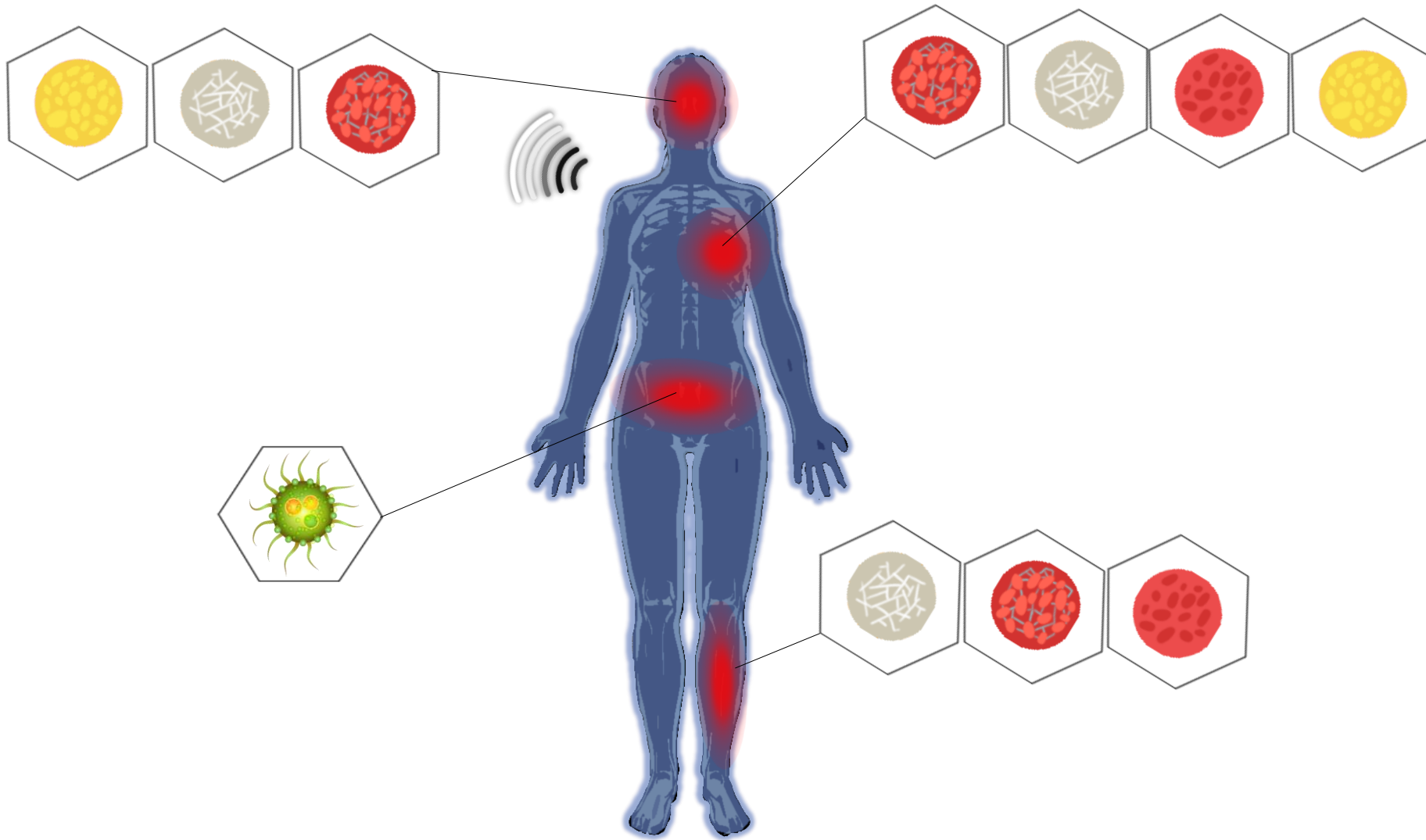
Human hair

Credit: <http://www.nisenet.org>



quality
science
biology
9engineers12people
microfabrication microelectronics
9Ph.D.s 6nationalities
data





SENSOME

Sensitive Medical Devices



